

Subj: **LWVGP Voter: May 2015**  
 Date: 4/22/2015 6:47:49 P.M. Eastern Daylight Time  
 From: [thevoter@grossepointe.mi.lwvnet.org](mailto:thevoter@grossepointe.mi.lwvnet.org)  
 To: [league@grossepointe.mi.lwvnet.org](mailto:league@grossepointe.mi.lwvnet.org)

## **Tues, May 5th is the Statewide Special Election. Dont Forget to Vote!!**

**Sat, May 9th is The Annual Spring Brunch & Meeting. RSVPs Due Soon!!**

# Grosse Pointe **VOTER**

Serving the Communities of  
 Grosse Pointe, Grosse Pointe Farms, Grosse Pointe Park, Grosse Pointe Shores,  
 Grosse Pointe Woods, and Harper Woods

### **Printouts for your Voter**

[Annual Brunch/Meeting RSVP Form](#)

[Join the League! Membership Form](#)

### **Activities this Month**

**Tues, May 5, 7 am-8 pm**  
 Statewide Special Election

**Sat, May 9, 8:30 am**  
*Annual Spring Brunch & Meeting*  
 Country Club of Detroit  
 220 Country Club Dr, GPF

*Keep reading below for additional details. Hope to see you there!*

### **LWVOA Annual Meeting: Speaker U.S. Attorney Barbara McQuade**

**U.S. Attorney  
Barbara  
McQuade** will  
 speak at the  
**Oakland Area  
LWV's Annual**



### **May 2015**

#### **Presidents' Letter**

Greetings,

The power point presentation regarding Proposition 1 on April 14th was excellent and well attended. The League did not take a pro or con position; a great deal of valuable information was presented by **State Voter Services Director Eva Packard**. Don't forget to VOTE on May 5th! This is an important issue for Michigan!



*Eva Packard & Ann Nicholson*

#### **The Constitution Amendment**

**Committee** meeting was held on April 16th. A group of interested members began the conversation leading to a study of Constitutional Conventions and how they can be held. It was a spirited discussion under the able leadership of Judge Lynne Pierce and Ann Nicholson.

The most important LWVGP event of the year, the **Annual Meeting**, will occur on Saturday May 9th at 8:30 a.m. at the Country Club of Detroit. It is a culmination of the calendar year and a summation of the activities and accomplishments in 2014/ 2015. The budget will be passed and the election of officers will take place. One of the most dynamic parts of the meeting is the "Directions to the Board", where the attendees can direct the board to consider the areas that they think important for the following year.

The speaker of the morning is **Dr. Sandra Robinson, Provost of the Mary Ellen Stempfle University Center**. The center has grown into a mecca for college classes for a number of well-known four year colleges in Michigan and has partnered with the University Center. The list is

**Meeting on Sat, June 6.** You may attend the lunch or go just for the speaker, whose topic will be "Prosecution in the 21st Century".

Plum Hollow Golf Club  
21631 Lahser Rd  
Southfield, MI 48033

9:30 Registration/10:00 Business Meeting/11:45 Luncheon/1:00 Speaker

Cost is \$35 for brunch and speaker, \$10 for speaker alone.  
Checks payable to LWVOA  
For additional information call 248 594-6602 or refer to [lwvoa.org](http://lwvoa.org)

## Many Thanks!

Many thanks to **Ann Lawson** for keeping our roster up to date for LWVUS. They are moving to a new database system, and we are grateful to Ann for seeing it through!

## Membership Matters

A big welcome to our two newest members!

Lisa Abbey  
Grosse Pointe Woods

Megan De Petro  
Grosse Pointe Woods

Our Membership Contest runs through May 1st. Studies show that most people join LWV because someone asked them to do so personally. Do the ASK and help build our membership and our effectiveness in the community.

Thanks to the generosity of owner Eddie Barbieri, the winner of this year's contest will win a one-hundred dollar (\$100) gift certificate for [Da Edoardo](#) restaurant. The winner will be announced at the May 9th Annual Meeting.

Jo Ann G. Kelly  
Membership Director

---

composed of both U of M - Dearborn, U of M - Flint, U of M College of Engineering and Computer Science, Ferris State University, Western Michigan University, and Northwood University. Each school works closely with the Center so that there will be a seamless transition from WCCC to the university. This is an integral part of the mission of the University Center.

The Annual Meeting is a good time to bring a friend who might be interested in finding out more about the League. If you attend you will find the food excellent and a great opportunity to get better acquainted.

[You can print out your reservation form here.](#)

It has been an honor to serve on the Presidential Team this year. It was a stellar experience to serve with such talented and dedicated members such as Ann Nicholson, Sharon Riley and Mary Zahler.

Thank you,  
Judy Morlan

Presidential Team

## May 9th - LWVGP Annual Spring Brunch & Meeting

**Saturday, May 9th**  
**Registration begins at 8:30 am**  
**Country Club of Detroit**  
**220 Country Club Drive**  
**Grosse Pointe Farms, MI 48236**

The speaker will be **Dr. Sandra Robinson, Provost of the Mary Ellen Stempfle University Center and its neighbor on Vernier, the Center for Distance Learning of Wayne County Community College.**

League members Judy Morlan and Fran Schonenberg have been longtime representatives on the Wayne County Community College District's Eastside Advisory Council, and it's time we became more acquainted with the new educational opportunities available to people of all ages through WCCCD. Have you noticed the new WCCCD buildings on Vernier? Do you know the educational possibilities these buildings represent for students in our area? And for retired people too?

Dr. Robinson has had a distinguished career in public education and was recognized nationally for developing and implementing innovative magnet programs at Martin Luther King High School in Detroit. Under her direction the University Center has secured partnerships with several colleges and universities so that students can complete degrees and access graduate level courses without having to leave the region. Distance learning, dual enrollment and webinars are opportunities not available twenty years ago - and what can students expect twenty years from now?

Registration begins at 8:30. Breakfast will be served at 8:45. The cost is \$26. Please send your registration form in to Mary Jo Johnson before April 25 if at all possible. The absolute deadline is May 4.

See you there!

[Print out your reservation form here](#)

*Do you know a family member or friend who is thinking about joining?  
[Hand them one of our membership forms to mail in!](#)*

## **Amending the Constitution: Discussion Meeting Held April 16th**

During 2015 the LWVUS Constitutional Amendment Committee will conduct a study and member agreement process on amending our nation's constitution. Article V of the U.S. Constitution provides two ways to amend the Constitution. Congress may propose an amendment by a 2/3 vote of each chamber or 2/3 of the states may ask Congress to call a Convention to propose amendments. Amendments proposed by either method require ratification by 3/4 (38) of the states.

All amendments to the Constitution have used the first process. Although State Legislatures have filed over 400 petitions calling for a Constitutional Convention to consider many different issues since 1788, a convention has never been successfully invoked. In more than one instance states have used the petition process to push Congress into acting. The momentum for limiting the President's term began in State Legislatures, for example, and Congress then passed a proposed amendment for the states to ratify.

There is no process for holding a Constitutional Convention. Does the wording of the petition from the states have to be identical? Can states withdraw their petitions? Can the President decline to appropriate funds to hold the convention? Should there be a time limit for petitions or for the Convention itself? How are minority voices represented? These are just a few of the unanswered questions.

Although the impetus for this study came from concern over the Citizens United decision, a movement to consider a balanced budget amendment is much further along. Our League met in April to familiarize ourselves with the basic questions,

## **LWV - Coming to Macomb County!**

LWV Macomb Voter Services team is off to a great start. We have established an energized, highly engaged core group...with plenty of need for support from anyone interested in helping and guiding our deliverables.

Plans are to target just two areas of the very large Macomb County, Warren and Sterling Heights. The city of St. Clair Shores was considered but they already have voter services provided by the long standing Women's Civic League.

We have defined our starting place which includes recruitment, awareness that there will be voter services in these cities (advertising), and strategizing for the November elections. Next steps will be to get trained on Vote411 and learn how to engage candidates, engagements to start in the August time frame. Regular meetings are to be established, starting at the end of May. We also need to form a link on the LWVGP website. A lot to do!

If anybody has any ideas on where in Macomb County we might be able to find a meeting location, please let me know. Remember, we are non-profit, so cost should be \$0!

All comments and suggestions accepted!

Respectfully submitted,

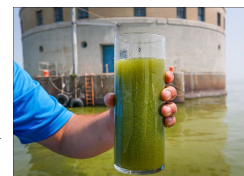
Maria Rivera  
 LWV - Macomb Voter Services  
[mriviera300@aol.com](mailto:mriviera300@aol.com)  
 (313) 815-6947

## **LWV Lake Erie Basin Committee Meeting Held April 15th**

Judy and I attended the spring meeting of the LWV's Lake Erie Basin Committee (LEBC) in Oregon, Ohio. Presentations and discussion involved various environmental topics from the fall algal bloom to a recent oil spill from the old Cleveland Public Power Plant. There were speakers from the Ohio Water Keepers and the University of Toledo's Lake Erie Center.

The Coast Guard, Environmental Protection Agency, Ohio DNR, Spill-Tek and others have conducted a continuous clean up of this spill, keeping it confined to a small portion of Maumee Bay in Lake Erie near Toledo. So far they have removed over 3,000 gal of oily water from the Forest City Yacht Club marina area. While the odor is much less the job is not yet complete!

There is also much concern for the algal blooms, which have often been a major problem in Lake Erie. There was a two two day shut down of tap water last August, due to this problem. The major cause seems to be phosphorous, which is a major component of fertilizer and manure, both of which are used to feed crops. While a phosphorous reduction helped for a while, the replacement of many cattle in fields by mega farms have caused an increase once again. Often fertilizers are put onto frozen ground, where it is not absorbed, but runs



and we look forward to learning more.

## Ballot Proposal Meeting Held April 14th

**Eva Packard, Voter Services Director, LWVMI**, gave an excellent presentation explaining the ballot proposal to raise additional money for Michigan's fund for roads and bridges.

This proposal, a compromise devised by leaders of both parties in Lansing, will ask voters to amend the state constitution to raise the limit on sales tax to 7% and to give the same exemption to gasoline from sales tax as is currently allowed to groceries and prescription medicines.

Sales tax is a funder of schools, but not of roads, so a series of bills are tied to the vote to ensure that school funding and the working poor are insulated from dramatic drops in revenue or purchasing power.

You may read the entire presentation at [LWVMI.org](http://LWVMI.org).

*The League of Women Voters encourages the informed and active participation of citizens in government; works to increase understanding of major public policy issues; and influences public policy through education and advocacy. The League is strictly nonpartisan, neither endorsing candidates nor supporting political parties. The LWVGP, in both its values and its practices, reaffirms its commitment to diversity. Membership is open to men and women of all ages.*



into the lakes and rivers with the spring rain. This can cause dead zones, which lack oxygen so significantly that fish cannot survive. This explains why fertilizer, manure, waste water, and storm water all required more attention.

A most significant observation deals with our changing climate. Models suggest that the growing season in the Great Lakes will increase by 1-2 months by 2100. There will be other effects as well, like more severe storms and droughts. There will be other effects on the number and kind of fish and the growth of invasive species from carp to zebra and quagga mussels. There is much to be concerned about relating to the effects of changing climate. Surely greater attention must be given to human influences on the climate!

Enough...for now ....  
Gordon Morlan  
Natural Resource Director

## 2014: Website Traffic Jumps in the Summer and Fall Election Months

In 2014, traffic to LWVGP's website grew 25% from the previous year. In that year the site had 36,128 "requests for pages" a significant increase from 2013's 28,905 requests.



The higher traffic occurred mainly in the months of July through November and is most likely attributable to interest in both the August primaries and November elections. October 2014 stands as the month with the highest traffic since the site's inception in late 2004.

Beth Martin  
Webmaster

## Prescription Drug Disposal Tip!

Traces of drugs are showing up in our water supplies, endangering aquatic life and tainting our drinking water. ***Do not flush those unwanted pills down the toilet or put them in the trash!***

St. John Pharmacy (Suite G25) is a DEA public disposal facility. Please take your unwanted meds there for safe disposal.

## League Links

Want to contact one of your government officials?  
[Click here!](#)

Want to check LWVGP's calendar for the latest updates?  
[Click here!](#)

[LWV Grosse Pointe](#)

[LWV Michigan](#)

[LWV United States](#)



["Like" the LWVGP on Facebook! And check out our activities here!](#)

[Join the League! Print out our membership form to mail in](#)

**[Forward email](#)**



This email was  
sent to  
[league@grossepointe.mi.lwvnet.org](mailto:league@grossepointe.mi.lwvnet.org)  
by  
[thevoter@grossepointe.mi.lwvnet.org](mailto:thevoter@grossepointe.mi.lwvnet.org)  
|  
[Update](#)  
[Profile/Email](#)  
[Address](#) | Rapid  
removal with  
[SafeUnsubscribe™](#)  
| [Privacy Policy](#).



League of Women Voters Grosse Pointe | 32 Lake Shore Drive | Grosse Pointe Farms | MI | 48236